



22/53-55 Alamein Street Beenleigh QLD

2 🛏 2 🚿 2 🚗

Positioned within the sought-after Kona Apartments complex, this modern two-bedroom residence delivers the perfect combination of comfort, convenience, and low-maintenance living in a central Beenleigh location. Showcasing elevated district views, a spacious balcony, and a bright open-plan design, this apartment presents an outstanding opportunity for owner-occupiers and investors alike.

Step inside and immediately appreciate the light-filled interiors, complemented by soft neutral tones and a functional layout designed for easy everyday living. The open-plan living and dining area seamlessly connects to the contemporary kitchen, complete with quality appliances, sleek cabinetry, generous bench space, and

Type : Unit
Price : New to Market
Building Size : 79 sqm
Land Size : 95 sqm
View : <https://www.eresidential.com.au/8705098>



Robby Christanto
07 3521 5478



Ken Ardhiha
07 3521 5478

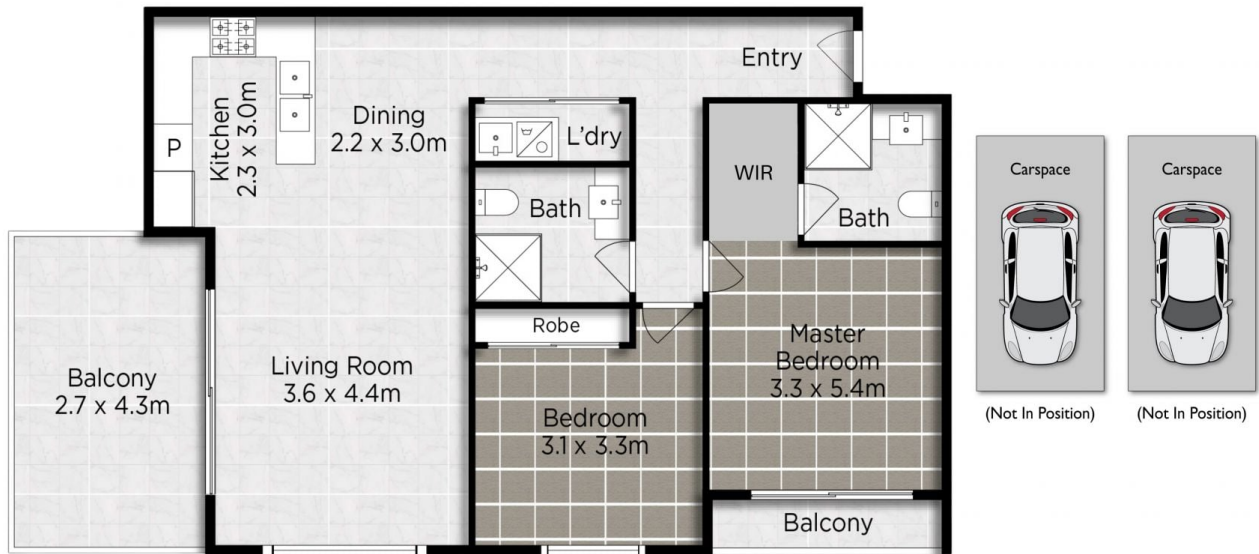
[For full version visit the website](https://www.eresidential.com.au)



Robby Christanto | 0425 970 333
 robby@eresidential.com.au



Ken Ardhiha | 0420 700 533
 ken.ardhiha@eresidential.com.au



22/53-55 Alamein Street, Beenleigh

2 2 2 95 m2



Scale in meters. Indicative only. Dimensions are approximate.
 All information contained herein is gathered from sources we believe to be reliable.
 However, we cannot guarantee its accuracy and interested persons should rely on their own enquiries.