



4 Alexandra Avenue Calamvale QLD

3 2 3

Positioned in a quiet and well-connected pocket of Calamvale, this well-presented residence at 4 Alexandra Av a.k.a 34/7 Gemview delivers the rare combination of space, comfort, and low-maintenance living - without feeling like a standard townhouse. From its generous outdoor areas to its practical layout, this one genuinely feels more like a freestanding home.

Freshly updated and ready to move straight into, the property has just been enhanced with brand new flooring throughout, creating a clean, modern, and inviting feel the moment you walk in. Whether you're a first-home buyer, downsizer, or investor, this is a property that stands out for all the right reasons.

Type : Townhouse
Price : New to Market!!
Building Size : 158 sqm
Land Size : 234 sqm
View : <https://www.eresidential.com.au/8701800>



Welly Cendana
07 3521 5478



Taan Suwanduang
07 3521 5478

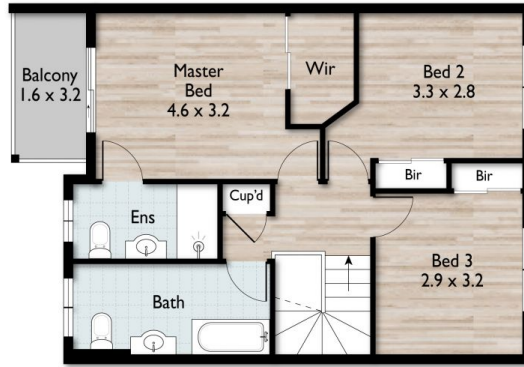
[For full version visit the website](https://www.eresidential.com.au)



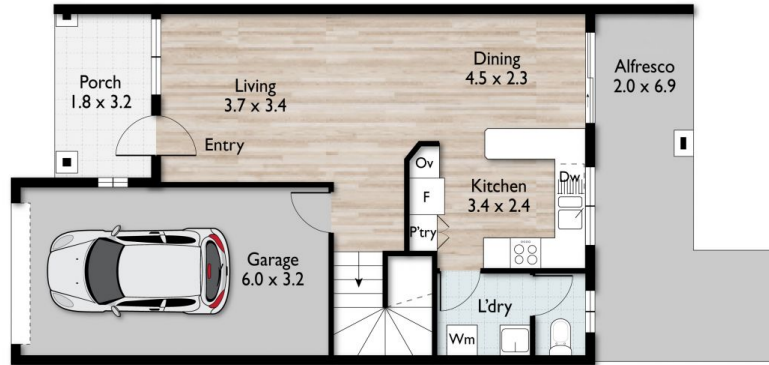
Welly Cendana | 0414 768 599
welly@eresidential.com.au



Taan Suwanduang | 0451 669 774
Taan@eresidential.com.au



First Floor



Ground Floor



34/7 Gemview Street, Calamvale, QLD, 4116

3 Beds 2 Baths 1 Car 158m² 234m²



Scale in meters. Indicative only. Dimensions are approximate.
All information contained herein is gathered from sources we believe to be reliable.
However, we cannot guarantee its accuracy and interested persons should rely on their own enquiries.