



**16 Tavuzzi Terrace Edens Landing QLD**

3 2 2

Located within easy walking distance from Edens Landing Shopping Centre and just 350 metres from the train station, this lovely home has everything a family could want with a warm and welcoming feel, an inviting living area, and a large yard with tropical gardens.

As you enter the home, you will come to the spacious lounge area with beautiful flooring and windows overlooking the lush front garden. The adjacent kitchen has ample bench space, white cabinetry, a striking red splashback, corner pantry, and quality appliances making entertaining easy.

Head outside to the backyard where you can have an alfresco lunch on the covered patio with family and friends

[For full version visit the website](https://www.eresidential.com.au/8534060)

**Type** : House  
**Price** : \$ 910,000  
**Building Size** : 167 sqm  
**Land Size** : 664 sqm  
**View** : <https://www.eresidential.com.au/8534060>



**Robby Christanto**  
07 3521 5478



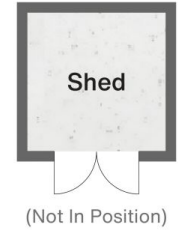
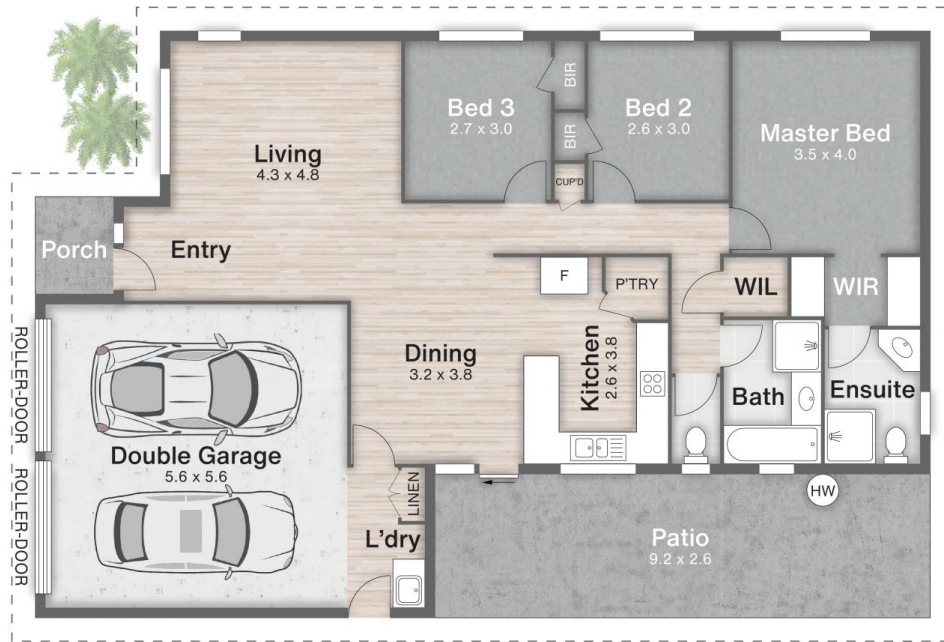
**Ken Ardhiha**  
07 3521 5478



**Robby Christanto** | 0425 970 333  
 robby@eresidential.com.au



**Ken Ardhiha** | 0420 700 533  
 ken.ardhiha@eresidential.com.au



16 Tavuzzi Terrace **EDENS LANDING**

3 Beds | 2 Bathrooms | 2 Car Spaces | 167m<sup>2</sup> | 664m<sup>2</sup>

All dimensions are approximate; they are subject to errors and inaccuracies and no liability will be accepted. Plans are shown for marketing purposes only.

**eresidential**  
 honesty, integrity, family.