



20/2 Brushbox Court Chapel Hill QLD

4 3 2

Positioned within the exclusive Kirkdale Residences, this architect-designed freestanding home offers refined sophistication, striking design, and effortless liveability. Built by an award-winning developer and completed in 2019, it showcases timeless finishes, generous proportions, and a tranquil setting that backs directly onto lush bushland.

Type : House
Price : \$ 1,560,000
Building Size : 202 sqm
Land Size : 463 sqm
View : <https://www.eresidential.com.au/834295>
 1

Every element has been carefully considered—from its elegant New York marble finishes and soaring ceilings to its seamless indoor-outdoor connection and expansive layout designed to suit modern families, professionals, or downsizers.

Key Features:

[For full version visit the website](https://www.eresidential.com.au)



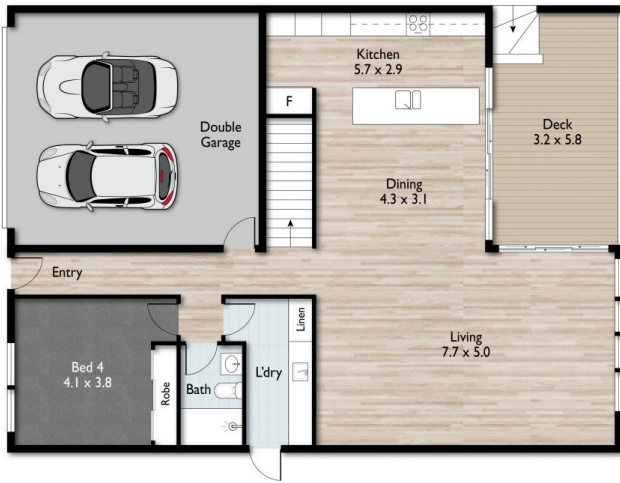
Welly Cendana
07 3521 5478



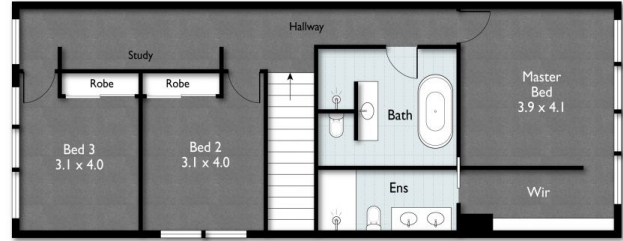
Taan Suwanduang
07 3521 5478



Welly Cendana | 0414 768 599
welly@eresidential.com.au



GROUND FLOOR



FIRST FLOOR

20/2 Brushbox Court, CHAPEL HILL

4 3 2 202m² 463m²



Scale in meters. Indicative only. Dimensions are approximate.
All information contained herein is gathered from sources we believe to be reliable.
However, we cannot guarantee its accuracy and interested persons should rely on their own enquiries.