



**39 Ridgevale Boulevard Holmview QLD**

4 2 2

This ex display home showcases a stunning design with quality finishes, a media room, space to entertain, and a low maintenance garden all located in a desirable area close to shops, transport and parks, while schools and major shopping are less than 10 minutes away.

As you approach the home, its modern exterior hints at the elegance that awaits you inside. Positioned directly across the street from Valley View Park, you have tranquil leafy views from the front yard as well as quick access to playgrounds and peaceful walking tracks around the park.

Enter into the main living area and you will feel right at home with an open plan design, cool neutral tones and a great indoor outdoor flow extending onto the covered

[For full version visit the website](https://www.eresidential.com.au)

**Type** : House  
**Price** : Offers Over \$850,000  
**Building Size** : 215 sqm  
**Land Size** : 429 sqm  
**View** : <https://www.eresidential.com.au/8257890>



**Robby Christanto**  
07 3521 5478

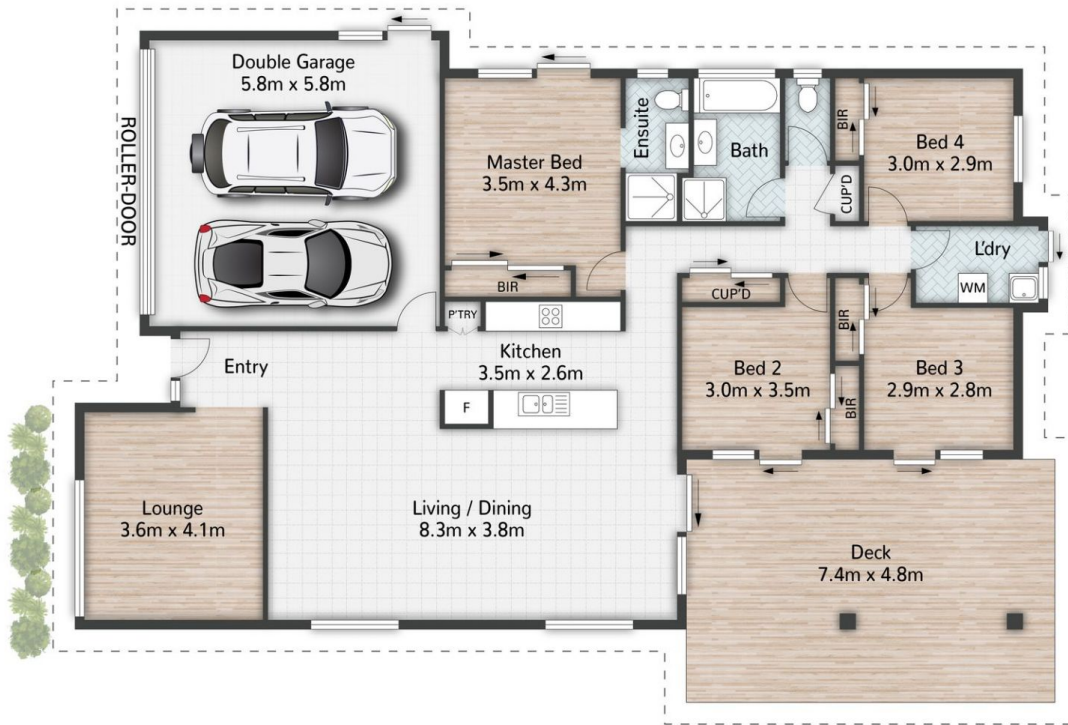


**Welly Cendana**  
0414 768 599



**Robby Christanto** | 0425 970 333  
 robby@eresidential.com.au

**Welly Cendana** | 0414 768 599  
 welly@eresidential.com.au



39 Ridgevale Boulevard **HOLMVIEW**

4 Beds | 2 Bathrooms | 2 Car Spaces | 215m<sup>2</sup> | 429m<sup>2</sup>

All dimensions are approximate; they are subject to errors and inaccuracies and no liability will be accepted. Plans are shown for marketing purposes only.

**eresidential**  
 honesty, integrity, family.