



6/19 Likala Street Wishart QLD

3 1 2

Relax in the spacious undercover backyard spa whilst taking in the beautiful private surrounds, including adjacent parkland. The open living area provides beautiful parquetry floors leading to a stylish timber panelled kitchen. All in such a convenient location, being a stroll to nearby shops and schools and within a 20 minute drive to the CBD.

Features:

- Open plan lounge/dining featuring parquetry flooring
- Stylish timber panelled kitchen featuring Simpson dishwasher and oven along with pantry and ample storage/bench space
- 3 upstairs bedrooms all with BIWs and ceiling fan to the master
- Main bathroom featuring full length bath
- Separate downstairs toilet and laundry
- Fully paved undercover backyard patio including spacious spa

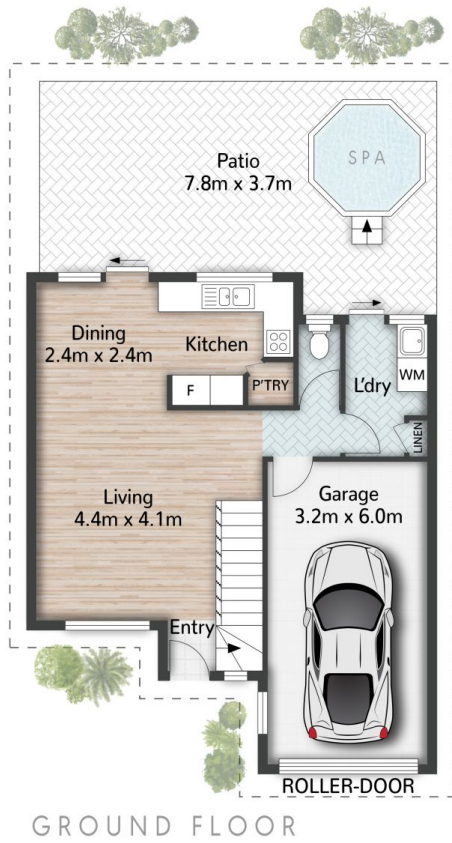
Price : \$ 688,000
Building Size : 132 sqm
Land Size : 212 sqm
View : <https://www.eresidential.com.au/794972>
 1



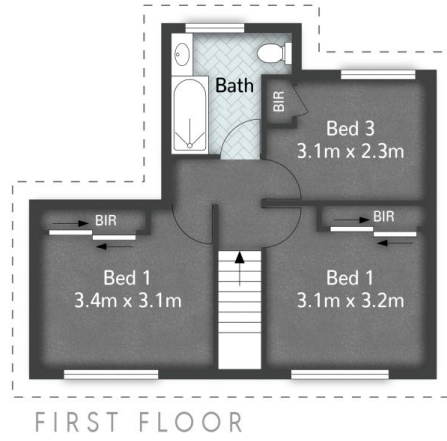
Welly Cendana
07 3521 5478



Peter Palmer
07 3521 5478



GROUND FLOOR



FIRST FLOOR

6/19 Likala Street **WISHART**

3 | 1 | 1 | 132m²

All dimensions are approximate; they are subject to errors and inaccuracies and no liability will be accepted. Plans are shown for marketing purposes only.

eresidential
honesty, integrity, family.