



59 Marcus Drive Regents Park QLD

4 🛏 2 🚿 2 🚗

Quality Family Home with Space to Entertain

This beautiful family residence combines modern living with comfort and style, with two living areas, a great master suite, a gorgeous kitchen, and a large outdoor entertaining zone all located in a quiet, leafy street in a desirable neighbourhood.

The home's elegant exterior with inviting entry and manicured gardens hints at the stylish interior that awaits you. Head inside to the open plan living area where warm neutral colours and an abundance of natural light make this feel like home. The contemporary kitchen is the heart of the home and boasts quality appliances, ample bench space, a 900mm gas stove, pendant lighting, and a large island

[For full version visit the website](https://www.eresidential.com.au)

Type : House
Price : \$ 885,000
Building Size : 226 sqm
Land Size : 588 sqm
View : <https://www.eresidential.com.au/787207>
 1



Robby Christanto
07 3521 5478



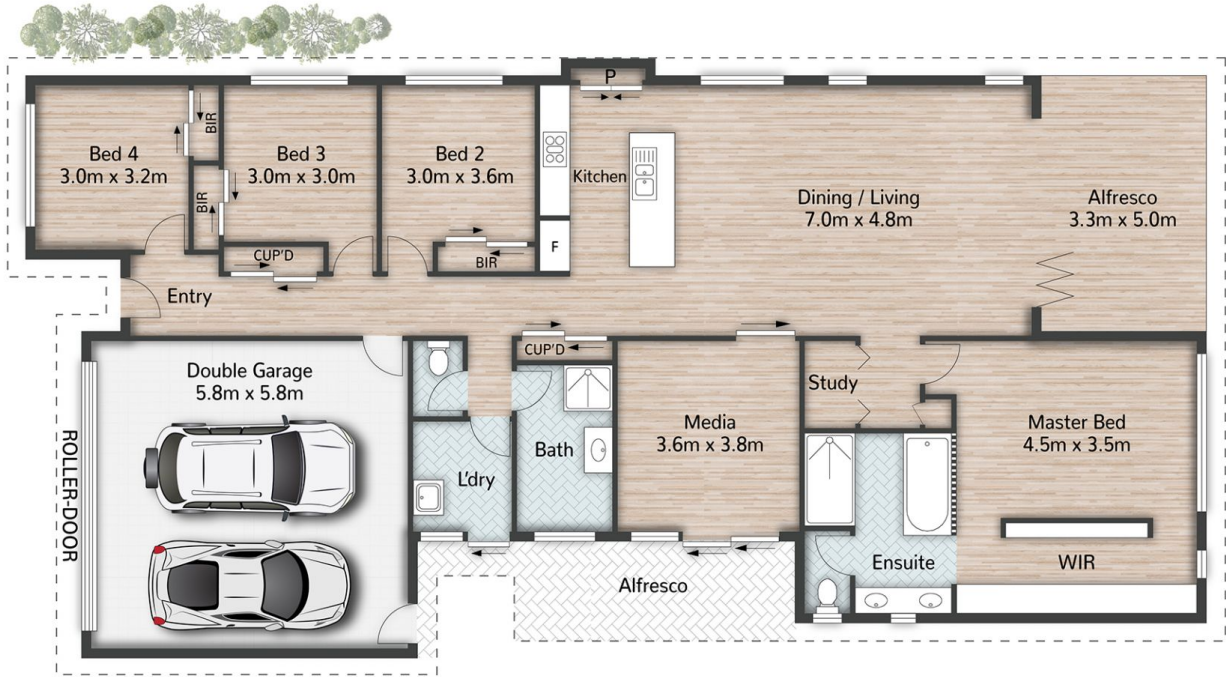
Welly Cendana
07 3521 5478



Robby Christanto | 0425 970 333
 robby@eresidential.com.au



Welly Cendana | 0414 768 599
 welly@eresidential.com.au



59 Marcus Drive **REGENTS PARK**

4 |
 2 |
 2 |
 226m² |
 588m²

All dimensions are approximate; they are subject to errors and inaccuracies and no liability will be accepted.
 Plans are shown for marketing purposes only.

